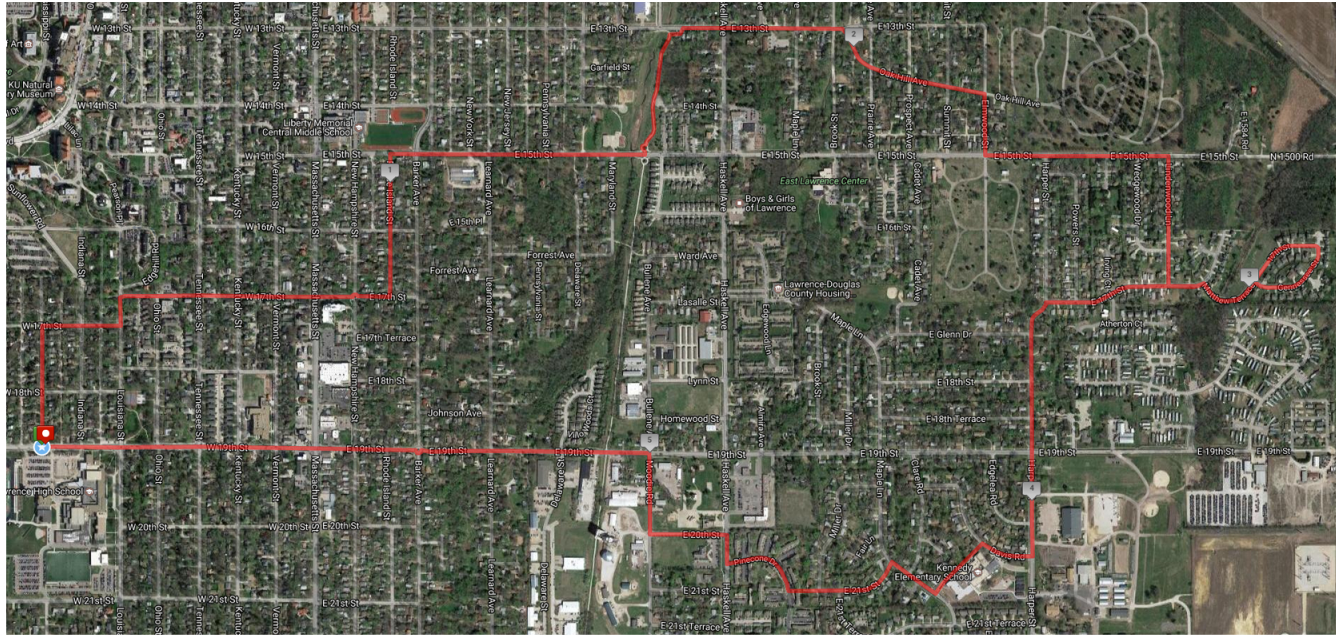


# EAST LAWRENCE LOOP



It's important to be cultured in the town you live, so here is a route that takes you through the east side of Lawrence. Start at LHS and go up Mississippi St. to 17th St. Take a right on 17th St. and go over to Louisiana St. Take a left at Louisiana St. and go up to 17th St. Take a right and run down 17th St. to Rhode Island St. Take a left at Rhode Island St. and run down to 15th St. Take a right at 15th St. and run to the Burrroughs Creek Trail. Take a left onto the trail and head over to 13th St. Take a right on 13th St. and head straight to Oak Hill Ave. Take a right at Oak Hill Ave. and follow it towards Oak Hill Cemetery. At Elmwood St. take a right and head back up to 15th St. Take a left at 15th St. and go to Lindenwood Ln and take a right. Head down Lindenwood Ln. to 17th St. and take a left. Loop around the neighborhood in a clockwise or counter clockwise direction and then go straight up 17th St. to Harper St. Take a left on Harper St. and head towards the Fairgrounds. Go past 19th St. and take a right on Davis Rd. Go about 200m and then take a left through the Kennedy Elementary access road to Maple Ln. Take a right on Maple Ln. and go to 21st St. At 21st St. take a left and go straight through to Pinecone Dr. Take a right at Pinecone Dr. and loop around to Haskell Ave. Take a right at Haskell Ave. and go a half block to 20th St. Take a left at 20th St. and go to Moodie Rd. Take a right on Moodie Rd. and go down to 19th St. Take a left on 19th St. and head back to LHS.

Total Distance: 6.8 Miles

“Don't compare with other teams. Comparing means you want what they have, and we have plenty. Let them compare themselves to us.”